



# SINGAPORE SALVAGE ENGINEERS



*Any Waters Any Seas . Since 1968*

24 AUGUST 2023



*SSE's Mission Statement*

To provide world-class marine services and state-of-the-art marine emergency response solutions with a “can do” spirit, that would satisfy the needs and exceed the expectations of our customers and business partners.



## Company Overview

Founded in 1968 by Mr. Francis Danakody, the Singapore Salvage Engineers Pte. Ltd (“SSE”) is a leading international service provider for maritime emergency and support services, especially in the area of salvage response and diving operations.

With a strong emphasis on providing world class marine services and state-of-the-art marine engineering solution, coupled with our “can do” spirit, we have been able to consistently deliver quality services to our customers and business partners even under challenging conditions in harsh operating environments.

SSE owns and operates more than 50 support vessels. The fleet includes a mix of crane barges, work barges, tugs with capabilities to combat oil pollution, supply boats, rescue boats, dive boats and landing pontoons among others. We are fully equipped to support a wide range of maritime emergency, pollution control and support activities.

SSE is dedicated to provide Competent Services, Commitment to resolve the assigned tasks and respecting the needs of our customers and business partners.





## Services

- ❖ Marine Salvage and Underwater Repairs
- ❖ Wreck Removal/ Disposal and Harbor Clearance
- ❖ Underwater Diving Operations and Hydrographic Surveys
- ❖ Environmental Protection and Pollution Control
- ❖ Marine Search and Rescue and Fire Fighting Services
- ❖ Cargo Recovery and Specialised Equipment



- ❖ Deployment/ Installation and Maintenance of Buoys and Beacons
- ❖ Anchor Installation and Recovery Operations
- ❖ Ocean Towing and Lashing
- ❖ Heavy Lift Operations
- ❖ Mooring Operations
- ❖ Marine Logistics
- ❖ General Marine Contractors



# Buoys & Beacons



Installation Of 6 Point Mooring System At Tanjong Pelepas Anchorage



Recovery, Maintenance & Deployment Of Navigational Buoy



Laying Of Navigational Buoy At Indonesia - Batam



Installation Of Takong Resilient Light Beacon In The Singapore Straits



Anchor Recovery For Oil Rig



Rigging Up Lifting Wire For Anchor Replacement



Installation Of New Sterpris Anchor



Installation Of 6 Point Mooring System



Heaving Up Port Side Anchor



Removing Ropes After Disentangling Anchor From Anchor Chain



# Diving Ops

With over 40 years of various underwater diving operations, SSE divers has gained tremendous expertise in:

- Saturation Diving,
- Bell Diving,
- Underwater Video (CCTV),
- Underwater Welding,
- Underwater Cutting, etc...



SSE Divers Gearing Up



Divers Surface After Ops



Divers Gearing Up



SSE Divers In Action



Cleaning Up Flange Of Thruster



CCTV Underwater Inspection



Inspection Of Pipeline Laying



← Hooking Up Tug For Ocean Tour of P53 To Brazil



→ Hooking Up Of 6 Point Mooring System For FPSO Vessel - P53



Hooking Up Of Vessel FPSO P53 To Temporary 6pts Mooring System



← ↑ Hooking Up Of Vessel "Petrobas 54" To 06 Point Mooring System At Raffles Reserved Anchorage



← Hooking Up Of Vessel FPSO Yuum Kak Naab To 06 Point Mooring



→ Unhooking Of Temporary Mooring System For Vessel FPSO P53





## Oil Rig Ops



Installation Of New 17 Ton Stevpris Anchor For Oil Rig "West Sirius"



SSE Divers - Cleaning Of Thruster Flange Before Installation



Lifting Of Thruster For Installation



Laying Of 04 Point Mooring For Oil Rig "Bingo 4" At Karimun



Laying Of 4 Marker Buoys For An Oil Rig

Specialising in salvage, SSE has succeeded in many complex salvage jobs. We have performed ops such as:

- Refloating of grounded barges and vessels,
- Wreck removal,
- Salvage of sunken vessels,
- Deep water salvage, etc...

We continuously strive to improve our salvage equipment to meet clients needs.



Sunken Police Coast Guard



Liquid Oxygen Tank



Collided Wooden Supply Boat



Upright Capsized Hopper Barge



Sunken Pleasure Craft



Sunken Floating Restaurant "Cheng Ho"



Indonesian Boat (PNS)



Collided Sunken Launch Boat



Sunken Bunker Vessel "Vista Mariner"

Sunken Craft "Famco Titus"





# Rescue & Other Marine Services



Rescue & Recovery Of Indonesian Vessel On Fire



Rescue 8 Crew Members From Sinking Vietnamese Vessel



Fire Fighting Onboard



Loading Of Items Onboard Vessel "Kadriah I" At PTP Anchorage



Towing Of Sailboat "Blue Gold" For Berthing At RSYC



Removal Of Entangled Anchor Chain from Vessel "Ginga Tiger"

Loading Of 01 Unit 12 Ton Generator On Board Vessel "M/V Modest"



Salvage of Many plus 17 at Punggol Aggregate Terminal



Removal and Disposal of Barge YTC 31 in Malaysia



Salvage of Cargo Vessel in Singapore



Removal and Disposal of Barge YTC 31 in Malaysia





# Press Articles

Our proudest moments captured by the mass media. SSE carrying out various salvage, diving operations including rescue...

Our proudest moments captured by the mass media. SSE carrying out various salvage, diving operations including rescue...

**JOBS**

**...Francis for cash**  
J.D. Indron

Two giant cannon stand sentinal at the bungalow of Singapore salvage engineer and diving supremo Francis Danakody.

They are not there to ward off evil but to remind the Danakody of their association with the sea. For the sea has been their passion.

Danakody, 43, and his brothers, Gabriel and Anthony, salvaged the cannon in September 1968 from the murky depths of the Eastern Anchorage, off busy Clifford Pier in Singapore harbour.

"It was mid-morning when we came across an object in 62 metres of water," said Danakody. "It was made of solid metal and looked like a cannon from the war."

The brothers hauled it up and after removing the marine growth they had a cannon 2.5 metres long and six tons in weight. Later they found another of similar size and weight.

**TRADE AND INDUSTRY**

**潜水队明赴南中国海 拍摄两荷兰潜艇残骸**

**Up she comes**

**Ship's 'treasures' found off Tuas**

**Heave! And up it comes...**

**BACK TO 'LIFE'**

**Lifebuoy linked to sinking ship nearly kills man**

**TRAINING BARGE**

**St. Anne II makes her debut**

**A NEW ADVENTURE IN DIVE TRAINING**

**Salvage crane barge St Anne is first to be launched in 15 years**

**NEWS FLASH**

**Passengers jump off after ferry crashes into steps**

**Ferry hits Clifford Pier steps and sinks**

**Boat in crabs salvaged from seabed**

**UP FROM THE DEEP**

**它缓缓地下沉... 打破生流漩涡**

**BACK TO 'LIFE'**

**TRAINING BARGE**

**St. Anne II makes her debut**

**A NEW ADVENTURE IN DIVE TRAINING**

**Salvage crane barge St Anne is first to be launched in 15 years**

# www.singaporesalvage.com



### General

License No.	: SR 2101F
Port of Registry	: Belize
Built	: Indonesia
Type of vessel	: Self-propelled Crane Barge
Classification	: Maritime Technical Systems & Services

### Machinery & Equipment

Main Engine	: Cummins KTA 19m 2 x 500 HP
Main Generator	: Mitsubishi 310 KW/60hz
AUX Power	: 1 X 10 KVA 1 X 20 KVA
Navigational Equipment	: VHF

### Principal Dimension

Length	: 28.0 M
Breadth	: 10.0 M
Depth	: 3.0 M
Gross Tonnage	: 237.0 Tons
Hull	: Steel
Clear deck space	: 39.57 m <sup>2</sup>

Auxiliary	
Surface Welding & Cutting Gears	
Underwater Welding & Cutting Gears	
L/P Compressor	

### Heavy Lift

Main	: 02 X 77 Tons
AUX	: 02 X 15 Tons 02 X 10 Tons
Davits	: 02 X 0.9 Tons

### Capacities

Fuel	: Diesel
Fuel Capacity	: 21.66 Tons
Fresh Water	: 60.48 Tons
Hydraulic	: 01.5 Tons
Dispersant Tank	: Nil

Anchor System	: Nil
---------------	-------

Accommodation	: Nil
---------------	-------



## General

License No.	: SR 2661A
Port of Registry	: Belize
Built	: Japan
Type of vessel	: Crane Barge
Classification	: Belize

## Principal Dimension

Length	: 54.1 M
Breadth	: 17.0 M
Depth	: 3.4 M
Gross Tonnage	: 658 Tons
Hull	: Steel
Clear Deck Space	: 392.53 m <sup>2</sup>

## Heavy Lift

Crane	: SKK-1400DT-A5
Max. Boom Length	: 30.40 M
Crane SWL	: 64 Tons
AUX	: 15 Tons
Lift Height	: 30 M

## Anchor System

4 Point / 8 Point Mooring  
3.5 Ton Anchor (08 Units)

## Machinery & Equipment

Main Engine	: N/A
Generator Output	: 110 Volts
Main Power	: 200 KVA
AUX Power	: 80 KVA
Navigational Equipment	: VHF, Radar, GPS

## Auxiliary

01 Aluminum Tender Boat  
Surface Welding & Cutting Gears  
Underwater Welding & Cutting Gears  
Hydraulic Power Pack

## Capacities

Fuel	: Diesel
Fuel Capacity	: 60 Tons
Fresh Water	: 35 Tons
Hydraulic	: 15 Tons

## Accommodation

Accommodation Rooms (20 pax)  
Mess Room  
Toilet / Shower  
Fully Air-Conditioned



### General

License No. : SR 2988B  
 Port of Registry : Belize  
 Built : Japan  
 Type of vessel : Crane Barge  
 Classification : Belize

### Machinery & Equipment

Main Engine : N/A  
 Generator Output : 220 Volts  
 Main Power : 200 KVA  
 AUX Power : 150 KVA  
 Navigational Equipment : VHF

### Principal Dimension

Length : 52.0 M  
 Breadth : 22.0 M  
 Depth : 3.7 M  
 Gross Tonnage : 1254.0 Tons  
 Hull : Steel  
 Clear Deck Space : 583.00 m<sup>2</sup>

### Auxiliary

01 Steel Tender Boat  
 Surface Welding & Cutting Gears  
 Underwater Welding & Cutting Gears  
 Hydraulic Power Pack

### Heavy Lift

Crane : IHI KF20005  
 Max. Boom Length : 40 M  
 Crane SWL : 190 Tons  
 AUX : 18 Tons  
 Lift Height : 47 M

### Capacities

Fuel : Diesel  
 Fuel Capacity : 118,670 ltr  
 Astern Ballast Tank : 500,000 ltr  
 Hydraulic : 1,000 ltr

### Anchor System

4 Point Mooring : 4 x 15 Tons  
 Anchor : 4 x 2.5 Tons

### Accommodation

Accommodation Rooms (20 pax)  
 Mess Room  
 Toilet / Shower  
 Fully Air-Conditioned



**General**

License No. : SR 8989C  
 Port of Registry : Singapore  
 Built : Indonesia  
 Type of vessel : Crane Barge  
 Classification : Bureau Veritas

**Principal Dimension**

Length : 64.20 M  
 Breadth : 27.00 M  
 Depth : 4.80 M  
 Gross Tonnage : 1800 Tons  
 Hull : Steel  
 Clear Deck Space : 934.42 m<sup>2</sup>

**Heavy Lift**

Crane : Favelle Favco PC200  
 Max. Boom Length : 50.40 M  
 Crane SWL : 150 Tons  
 AUX : 15 Tons  
 Lift Height : 65 M

**Anchor System**

8 Point Mooring : 8 x 25 Tons  
 Anchor : 4 Ton Flipper Delta

**Machinery & Equipment**

Main Engine : N/A  
 Generator Main Power : 400 KVA x 2  
 AUX Power : 90 KVA  
 Navigational Equipment : VHF / GPS

**Auxiliary**

Surface Welding & Cutting Gears  
 Underwater Welding & Cutting Gears  
 Hydraulic Power Pack  
 Air Compressor

**Capacities**

Fuel : Diesel  
 Fuel Capacities : 152 cu.m  
 Slop Tank (P) : 55.3 cu.m  
 Dispersant Tank (S) : 55.3 cu.m  
 Dirty Oil/Sludge Tanks : 5.5 cu.m  
 Bilge Holding Tanks : 8.2 cu.m  
 Hydroil Storage Tank (P) : 3.9 cu.m  
 Hydroil Day Tank (P) : 1.9 cu.m  
 LO Storage Tank (S) : 5.9 cu.m

**Accommodation**

Accommodation Rooms (36pax)  
 Galley (01 unit)  
 Pantry (01 unit)  
 Mess Room (02 units)



<b><u>General</u></b>		<b><u>Machinery &amp; Equipment</u></b>	
License No.	: SR 4046J	Main Engine	: N/A
Port of Registry	: Singapore	Generator Main Power	: 400 KVA x 2
Built	: Damen Shipyards	AUX Power	: 90 KVA
Type of vessel	: Crane Barge	Navigational Equipment	: VHF / GPS
Classification	: ABS		
<b><u>Principal Dimension</u></b>		<b><u>Auxiliary</u></b>	
Length	: 80.25 M	01 Aluminium Tender	
Breadth	: 25.00 M	Boat	
Depth	: 4.50 M	Surface Welding & Cutting Gears	
Gross Tonnage	: 2541	Air Compressor	
Hull	: Steel		
Clear Deck Space	: 950 m <sup>2</sup>		
<b><u>Heavy Lift</u></b>		<b><u>Capacities</u></b>	
Crane	: PLM 6400 P234	Fuel	: Diesel
Max. Boom Length	: 65.00 M	Fuel Capacities	: 106 cu.m
Optional	: 70.00 M	Sewage	: 33.5 cu.m
Crane SWL	: 400 Tons	Ballast Water Tank (P & S)	: 3311.2 cu.m
AUX	: 20 Tons	Dirty Oil/Sludge Tanks	: 1.5 cu.m
Lift Height	: 60 M		
<b><u>Anchor System</u></b>		<b><u>Accommodation</u></b>	
6 Point Mooring	: 6 x 25 Tons	Accommodation	: 6 Pax
Anchor	: 5 Ton Flipper Delta	Galley	: 01 Unit



## General

License No. : SR 9191Z  
Port of Registry : Nil  
Built : Netherlands  
Classification : Nil  
Type of vessel : Crane Barge

## Machinery & Equipment

Main Engine : N/A  
Generator : 110 KVA  
Compressor : 1000 1/min. 8 bar  
Navigational Equipment : VHF

## Principal Dimension

Length : 62.40 M  
Breadth : 23.00 M  
Depth : 5.00 M  
Gross Tonnage : 1,800 Tons  
Hull : Steel  
Clear Deck Space : 602.30 m<sup>2</sup>

## Heavy Lift

Crane : Manitowoc 36'  
: Platform Ringer  
Max. Boom Length : 60 M  
Crane SWL : 2 x 125 Tons  
AUX : 20 Tons  
Lift Height : 63 M

## Capacities

Fuel : Diesel  
Fuel Capacities : 102 Tons  
Fresh Water : 534 Tons

## Anchor System

4 Point / 8 Point Mooring  
6 – 2500 KG Flipper Delta High Holding Power

## Accommodation

Air-conditioned Office Container x 1  
Air-conditioned Canteen x 1  
Fully Equipped Workshop / Store



### General

License No.	: SR 3998E
Port of Registry	: Singapore
Built	: Singapore
Type of vessel	: Crane Barge
Classification	: Bureau Veritas

### Machinery & Equipment

Main Engine	: N/A
Generator Cycle	: 50/60 Hz
Main Power	: 200 KVA
Navigational Equipment	: VHF

### Principal Dimension

Length	: 28.80 M
Breadth	: 16.80 M
Depth	: 2.40 M
Gross Tonnage	: 307.00 Tons
Hull	: Steel
Clear Deck Space	: 314.56 m <sup>2</sup>

### Auxiliary

Surface Welding & Cutting Gears

### Heavy Lift

Crane	: TTS
Max. Boom Length	: 27 M
Crane SWL	: 20 Tons
Lift Height	: 35 M

### Capacities

Fuel	: Diesel
Fuel Capacity	: 5.6 Tons x 2 tanks: 11.6 Tons
Fresh Water	: 51.00 Tons
Hydraulic	: 200 ltrs

### Anchor System

4 points mooring

### Accommodation

08 men (2x2) / (4x1)  
03 toilets





### General

License No. : SR 3999C  
Port of Registry : Avatiu/Cook Island  
Built : Singapore  
Type of vessel : Crane Barge  
Classification : Nil

### Machinery & Equipment

Main Engine : N/A  
Generator Cycle : 50/60 Hz  
Main Power : 150 KVA  
Navigational Equipment : VHF

### Principal Dimension

Length : 26.3 M  
Breadth : 10.9 M  
Depth : 2.4 M  
Gross Tonnage : 177.00 Tons  
Hull : Steel  
Clear Deck Space : 167.78 m<sup>2</sup>

### Auxiliary : Nil

### Heavy Lift

Crane : TTS  
Max. Boom Length : 17 M  
Crane SWL : 6.3 Tons  
Lift Height : 30 M

### Capacities

Fuel : Diesel  
Fuel Capacity : 07 Tons  
Fresh Water : 04 Tons

### Anchor System

4 point mooring

### Accommodation

Accommodation Rooms (08 pax)



**General**

License No. : ST 9191 G  
 Port of Registry : Penang  
 Built : Malaysia  
 Type of Vessel : Tug boat  
 Classification : Ship Classification of Malaysia

**Machinery & Equipment**

Main Engine : Caterpillar D399  
 2 X 1250 BHP  
 Generator : Caterpillar 3304  
 52kw  
 Gearbox : Twin disc  
 Navigational Equipment : GPS, Radar, NAVTEX, VHF/Compass

**Principal Dimension**

Length : 28.00 M  
 Breadth : 8.10 M  
 Depth : 4.0 M  
 Gross Tonnage : 212  
 Hull : Steel  
 Speed : 12 Knots

**Capacities**

Fuel : Diesel  
 Fuel Capacity : 170 Tons  
 Fresh Water : 30 Tons  
 Lube Oil : 300 ltrs  
 Dispersant Tank : Nil

**Crew Capacity**

12 Persons

The specifications provided are believed to be true but not guaranteed.



### General

License No. : ST 2988 Z  
 Port of Registry : Singapore  
 Built : Sibu, Malaysia  
 Type of Vessel : Tug Boat  
 Classification : Nippon Kaiji Kyokai

### Machinery & Equipment

Main Engine : Yanmar 6AYM-WET  
 829PS@1900RPM x  
 2 units  
 Generator : Yanmar ; 40 kW x 2  
 units  
 Gearbox : Ratio 5.91:1  
 Navigational Equipment : VHF, GPS, EPRIB,  
 SSB, Chart Plotter,  
 AIS, Satellite Phone

### Principal Dimension

Length : 25.4 M  
 Breadth : 8.00 M  
 Depth : 3.6 M  
 Gross Tonnage : 195 Tons  
 Hull : Steel  
 Speed : 12 Knots

### Capacities

Fuel : Diesel  
 Fuel Capacity : 150 M<sup>3</sup>  
 Fresh Water : 40 M<sup>3</sup>  
 Ballast Water : 30 M<sup>3</sup>  
 Dispersion Tank : 1.90 Tons  
 Crew Capacity : 10 Persons

\*Tugboat for laying oil boom with dispersant spray boom, towing and pushing capabilities

The specifications provided are believed to be true but not guaranteed.



**SSE ADIRA**



**General**

**License No.** : ST 16322

**Port of Registry** : Belize

**Built** : Singapore

**Type of Vessel** : Utility Boat

**Classification** : Maritime Technical Systems & Services

**Machinery & Equipment**

**Main Engine** : Cummins KTA-38M X 2units  
RPM: 1800, 2 X 940HP

**Generator** : Perkins, 12 DB2435-4759  
2units X 60HP

**Gear Box** : Twin Disc MG-350

**Navigational Equipment** : VHF, GPS, Satellite Phone

**Principal**

**Dimension**

**Length** : 29.95 M

**Breadth** : 9.0 M

**Depth** : 3.5 M

**Gross Tonnage** : 253 Tons

**Hull** : Steel

**Speed** : 11 Knots

**Capacities**

**Fuel** : Diesel

**Fuel Capacity** : 160 Tons

**Fresh Water** : 67 Tons

**Ballast Water** : Nil

**Dispersant** : Nil

**Crew Capacity** : 25 Persons

The specifications provided are believed to be true but not guaranteed.



**SSE NIKITA**



### General

License No. : ST 1490 D  
Port of Registry : Singapore

Built : Malaysia  
Type of Vessel : Tug boat  
Classification : RINA

### Principal Dimension

Length : 23.9 M  
Breadth : 8.2 M  
Depth : 3.6 M  
Gross Tonnage : 197  
Hull : Steel  
Speed : 11 Knots

### Machinery & Equipment

Main Engine : Mitsubishi S6R2-  
MPTK  
2 X 800 BHP = 1600  
BHP  
Generator : 2 X 36 kW  
Gearbox : REINTJES WAF 463  
4.577 : 1 RATIO  
Navigational Equipment : GPS, Radar, NAVTEX,  
VHF/Compass

### Capacities

Fuel : Diesel  
Fuel Capacity : 196 Tons  
Fresh Water : 18.5 Tons  
Ballast : 31.5 Tons  
Dispersant Tank : Nil

Crew Capacity  
12 persons

The specifications provided are believed to be true but not guaranteed.



## General

License No. : ST 14281  
Port of Registry : Singapore  
Built : Indonesia  
Type of Vessel : Steel Tug  
Boat  
Classification : DNV-GL

## Machinery & Equipment

Main Engine : Cummins KTA 19-M5 500 x 2  
Generator : RPM 1800 Yanmar TS 230  
Gear Box : ZF W350 Ratio 1:4.962  
Navigational Equipment : VHF, Radar, GPS, Chart Plotter, Compass

## Principal

### Dimension

Length : 19.8 M  
Breadth : 6.80 M  
Depth : 3.40 M  
Gross Tonnage : 107.0 Tons  
Hull : Steel  
Speed : 10 Knots

## Capacities

Fuel : Diesel  
Fuel Capacity : 50.71 Tons  
Fresh Water : 8.65 Tons  
Ballast Water : Nil  
Dispersant Tank : Nil

The specifications provided are believed to be true but not guaranteed.


General

**License No.** : ST 1288Z  
**Port of Registry** : Singapore  
**Built** : China  
**Classification** : Bureau Veritas  
**Type of Vessel** : Tug Boat

Machinery & Equipment

**Main Engine** : VOLVO PENTA D12-500  
                   : 2 x 493 HP = 986 HP  
**Generator** : Perkins HP28/1500C  
                   : 2 x 20.6 kW (1500rpm)  
**Gear Box** : Twin Disc  
**Navigational Equipment** : VHF, Radar, GPS, Chart Plotter

Principal Dimension

**Length** : 15.0 M  
**Breadth** : 6.0 M  
**Depth** : 2.9 M  
**Gross Tonnage** : 61.0 Tons  
**Hull** : Steel

Capacities

**Fuel** : Diesel  
**Fuel Capacity** : 17.39 Tons  
**Fresh Water** : 13.26 Tons  
**Ballast Water** : Nil  
**Dispersant Tank** : Nil  
**Crew Capacity** : 6 Persons

The specifications provided are believed to be true but not guaranteed.


General

**License No.** : ST 1228F  
**Port of Registry** : Singapore  
**Built** : Singapore  
**Type of Vessel** : Tug Boat  
**Classification** : Bureau Veritas

Principal Dimension

**Length** : 15.0 M  
**Breadth** : 6.0 M  
**Depth** : 2.7 M  
**Gross Tonnage** : 59.0 Tons  
**Hull** : Steel

Machinery & Equipment

**Main Engine** : VOLVO PENTA D12-550 B-MH  
 2 x 440 HP = 880 HP  
**Generator** : YANMAR Diesel  
 2 X 25.6 kW  
 2 X 1500 Rpm  
**Gear Box** : Twin Disc  
**Navigational Equipment** : VHF, Radar, GPS, Chart Plotter

Capacities

**Fuel** : Diesel  
**Fuel Capacity** : 15.59 Tons  
**Fresh Water** : 13.65 Tons  
**Ballast Water** : Nil  
**Dispersant Tank** : Nil  
**Crew Capacity** : 6 Persons

The specifications provided are believed to be true but not guaranteed.





General

License No. : ST 1188C  
 Port of Registry : Nil  
 Built : Japan  
  
 Type of Vessel : Twin Screw Tug  
 Classification : Nil

Machinery & Equipment

Main Engine : Yanmar 2 x 650 HP @ 900 RPM  
 Generator : Yanmar 10 HP @ 800 RPM  
 Gear Box : Yanmar  
 Navigational Equipment : VHF / Compass

Principal Dimension

Length : 12.60 M  
 Breadth : 5.0 M  
 Depth : 2.0 M  
 Gross Tonnage : 35  
 Hull : Steel  
 Speed : 10 Knots

Capacities

Fuel : Diesel  
 Fuel Capacity : 19 Tons  
 Fresh Water : 5 Tons  
 Lube Oil : 500 ltrs  
 Ballast Water : Nil  
 Dispersant Tank : Nil

Crew Capacity

10 persons

The specifications provided are believed to be true but not guaranteed.



**SSE CHARLOTTE**



### General

License No. : ST 1469F  
Port of Registry : Singapore  
Built : Malaysia

Type of Vessel : Twin Screw Tug

Classification : DNV

### Principal Dimension

Length : 22.01 M  
Breadth : 7.32 M  
Depth : 3.20 M  
Gross Tonnage : 143  
Hull : Steel  
Speed : 10 Knots

### Machinery & Equipment

Main Engine : Yanmar 2 x 485 HP @ 970 RPM  
Generator : 2 x YANMAR 4TNV98-GGE2 30.7 kW / 34.1 kW  
Gear Box : 2 x REINTJES WAR 364L Ratio 6048:1  
Navigational Equipment : VHF / Compass

### Capacities

Fuel : Diesel  
Fuel Capacity : 80 Tons  
Fresh Water : 26 Tons  
Ballast Water : Nil  
Dispersant Tank : Nil

### Crew Capacity

10 persons

The specifications provided are believed to be true but not guaranteed.



<u>General</u>		<u>Machinery &amp; Equipment</u>	
Port of Registry	: Avatiu/ Cook Island	Main Engine	: 2units X 400HP Caterpillar 3408
Type of Vessel	: Utility Tug	Generator	: 1unit X 125KW Caterpillar 3306 & 1unit X 30KW Caterpillar 3304
		Gear Box	: Fixed Pitch in Nozzles
		Navigational Equipment	: SSB, VHF, Radar, GPS, Echo sounder, EPIRB, Magnetic Compass, SRT, FWD looking echo Pilot sonar, PA System, Navtex Receiver, GMDSS
Classification	: DNV		
<u>Principal Dimension</u>		<u>Capacities</u>	
Length	: 27.50 M	Fuel	: Diesel
Breadth	: 7.60 M	Fuel Capacity	: 50 Tons (8 Tons void/fuel tanks)
Depth	: 2.90 M	Fresh Water	: 24 Tons (13 Tons void)
Gross Tonnage	: 176 Tons	Ballast Water	: Nil
Hull	: Steel	Dispersant Tank	: Nil
Speed	: 10 Knots	Crew Capacity	: 11 Persons + (4 Person Container) = 15 Persons

The specifications provided are believed to be true but not guaranteed



### General

License No. : ST 1988 D  
 Port of Registry : Singapore  
  
 Built : Malaysia  
 Type of Vessel : Tug Boat  
 Classification : DNV-GL

### Machinery & Equipment

Main Engine : Caterpillar 3406 BTA x 02  
 Generator : 2 units  
                : 2 x 20 KVA  
 Gear Box : Twin disc  
 Navigational Equipment : VHF, Compass, GPS, AIS

### Principal Dimension

Length : 18.8 M  
 Breadth : 6.4 M  
 Depth : 2.8 M  
 Gross Tonnage : 89.0 Tons  
 Hull : Steel  
 Speed : 10 Knots

### Capacities

Fuel : Diesel  
 Fuel Capacity : 30 Tons  
 Fresh Water : 40 Tons  
 Dispersant Tank : 1.2 Tons  
 Ballast Water : Nil  
  
 Crew Capacity : 5 persons

The specifications provided are believed to be true but not guaranteed.



### General

**License No.** : ST1174C  
**Port of Registry** : Singapore  
**Built** : Indonesia  
**Type of Vessel** : Steel Tug Boat  
**Classification** : DNV-GL

### Machinery & Equipment

**Main Engine** : Cummins NTA 855-M400;  
 2 x 298.00 KW  
**Generator** : 20 KVA  
**Gear Box** : Twin disc  
**Navigational Equipment** : VHF, Compass

### Principal Dimension

**Length** : 16.95 M  
**Breadth** : 5.8 M  
**Depth** : 2.96 M  
**Gross Tonnage** : 73 Tons  
**Hull** : Steel  
**Speed** : 10 Knots

### Capacities

**Fuel** : Diesel  
**Fuel Capacity** : 30.0 Tons  
**Fresh Water** : 12.0 Tons  
**Dispersant Tank** : 1.5 Tons  
**Ballast Tank** : Nil  
**Crew Capacity** : 5 persons

The specifications provided are believed to be true but not guaranteed.



General

License No. : ST 0661 H / ST 0650 B  
 Port of Registry : Singapore  
 Built : Singapore  
 Type of Vessel : Tug Boat  
 Classification : ABS+A 1+AMS

Machinery & Equipment

Main Engine : Cat 3406 TA Diesel  
 Generator : 230V 12.5KVA 50 HZ  
 54.3 Amp Alternator driven by Deutz F 2L 912 Diesel  
 Gearbox : Twin disc MG 514C; Ratio 4.5 : 1  
 Navigational Equipment : VHF, Chart Plotter, AIS

Principal Dimension

Length : 15.70 M  
 Breadth : 5.60 M  
 Depth : 2.80 M  
 Gross Tonnage : 50 Tons  
 Hull : Steel  
 Speed : 10.9 Knots

Capacities

Fuel : Diesel  
 Fuel Capacity : 24 Tons HSD  
 Fresh Water : 17.5 Tons  
 Ballast Water : Nil  
 Dispersant Tank : Nil  
 Crew Capacity : 4 persons

The specifications provided are believed to be true but not guaranteed.



**General**

License No. : ST 1688 E  
 Port of Registry : Nil  
 Built : Australia  
 Type of Vessel : Tug Boat  
 Classification : Nil

**Machinery & Equipment**

Main Engine : Caterpillar; 380 HP  
 Generator : 13 KVA  
 Gear Box : Twin disc  
 Navigational Equipment : VHF, Chart Plotter, AIS

**Principal Dimension**

Length : 14.90 M  
 Breadth : 5.20 M  
 Depth : 1.80 M  
 Gross Tonnage : 39.3 Tons  
 Hull : Steel  
 Speed : 12 Knots

**Capacities**

Fuel : Diesel  
 Fuel Capacity : 10,000 ltrs  
 Fresh Water : 5,000 ltrs  
 Hydraulic : 90 ltrs  
 Ballast Water : Nil  
 Dispersant Tank : Nil  
 Crew Capacity : 3 persons

The specifications provided are believed to be true but not guaranteed.



### General

License No. : ST 1142E

Port of Registry : Singapore

Built : Singapore

Type of Vessel : Tug Boat

Classification : Nil

### Machinery & Equipment

Main Engine : Cummins 1 x 280;  
1 x 208 kW  
400 HP

Generator : N/A

Gearbox : Twin disc

Navigational Equipment : VHF, AIS

### Principal Dimension

Length : 9.1 M

Breadth : 3.0 M

Depth : 1.8 M

Gross Tonnage : 13.8 Tons

Hull : Steel

Speed : 15 knots

### Capacities

Fuel : Diesel

Fuel Capacity : 3,500 ltrs

Fresh Water : 200 ltrs

Ballast Water : Nil

Dispersant Tank : Nil

Crew Capacity : 4 persons

\*Tugboat for laying oil boom, towing and pushing capabilities

The specifications provided are believed to be true but not guaranteed.





### General

License No. : SR 2202J

Port of Registry : Belize

Built : Singapore

Type of vessel : Work Boat

Classification : Maritime Technical Systems & Services

### Principal Dimension

Length : 29.6 M

Breadth : 9.5 M

Depth : 2.0 M

Gross Tonnage : 158.0 Tons

Hull : Steel

Speed : 10 Knots

Crane : Sormec

Crane Capacity : 6 Tons

Max. Boom Length : 18 M

### Winch

Capacity : 25 Tons

Winch Type : Single Drum

### Machinery & Equipment

Main Engine : Cummins  
2 x 350 HP

Generator : 2 x 50 KVA

Gear Box : Twin disc

Navigational Equipment : VHF, Chart Plotter, AIS

### Capacities

Fuel : Diesel

Fuel Capacity : 5500 ltrs

Fresh Water : 6000 ltrs

Dispersant Tank : 1.00 Ton

Ballast Waster : Nil

### Crew Capacity

10 persons

The specifications provided are believed to be true but not guaranteed.



### General

**License No.** : SR 2845 B  
**Port of Registry** : Avitau/Cook Island  
**Built** : Japan  
**Classification** : S.B.S  
**Type of Vessel** : Workboat

### Machinery & Equipment

**Main Engine** : Mitsubishi 3618 X 2units  
**Generator** : 1 x Yanmar / 1 x Cummins  
**Gear Box** : MCN56B – 19  
**Navigational Equipment** : VHF, AIS

### Principal Dimension

**Length** : 23.50 M  
**Breadth** : 8.70 M  
**Depth** : 2.80 M  
  
**Gross Tonnage** : 162 Tons  
**Hull** : Steel  
**Speed** : 10 Knots

### Capacities

**Fuel** : Diesel  
**Fuel Capacity** : 23 Tons  
**Fresh Water** : 37 Tons  
**Ballast Water** : 25 Tons  
**Dispersant Tank** : Nil  
  
**Crew Capacity** : 9 persons

The specifications provided are believed to be true but not guaranteed.



# SSE ANASTASIA



## General

License No. : SR 2316G  
 Port of Registry :  
 Built : Holland  
 Type of Vessel : MULTI CAT

## Principal Dimension

Length : 18.60 M  
 Breadth : 8.04 M  
 Depth : 2.40 M  
 Draft : 1.80 M  
 Hull : Steel

Crane : Hydraulic  
 Crane Capacity : 65 Ton/M  
 Max. Boom Length : 8.00 M

## Winch

Capacity : 40 Tons  
 Winch Type : Single Drum

## Machinery & Equipment

Main Genset/Alternator  
 Marker : SDMO  
 KVA : 180 X 50Hz X 1500rpm  
 Voltage : 230V /400V  
 Sn : EF082615/03  
 Gearbox : 2F 4.5 to 1  
 Navigational Equipment : VHF

## Capacities

Fuel : Diesel  
 Fuel Capacity : 1700 Cu.M  
 Fresh Water : 1200 Cu.M

The specifications provided are believed to be true but not guaranteed.



### General

License No. : SR 3355 C  
Port of Registry : Nil  
Built : Australia  
Type of Vessel : Work Boat  
Classification : Nil

### Machinery & Equipment

Main Engine : Cummins Diesel Inboard  
2 x 350 HP  
Generator : N/A  
Gearbox : N/A  
Navigational Equipment : VHF, AIS

### Principal Dimension

Length : 15.0 M  
Breadth : 7.0 M  
Depth : 1.8 M  
Gross Tonnage : 53.3 Tons  
Hull : Steel  
Speed : 8 Knots

### Capacities

Fuel : Diesel  
Fuel Capacity : 2.5 Tons  
Fresh Water : 6 Tons  
Hydraulic : 1.5 Tons  
Ballast Water : Nil  
Dispersant Tank : Nil

Crane : Effer 44 N55  
Crane Capacity : 6.7 Tons  
Max. Boom Length : 8.00 M

Crew Capacity  
04 persons

### Winch

Capacity : 10 Tons  
Winch Type : Single Drum

The specifications provided are believed to be true but not guaranteed.



# SSE MACARENA



## General

License No. : SR 2602F  
 Port of Registry : Nil  
 Built : UK  
 Type of Vessel : Supply Workboat  
 Classification : Nil

## Machinery & Equipment

Main Engine : Cummins Diesel Inboard x 2  
 2 x 750 HP  
 Generator : 1 x Kubota / 1 x 20 kVA  
 Gear Box : Twin disc  
 Navigational Equipment : VHF, Compass, AIS

## Principal Dimension

Length : 13.9 M  
 Breadth : 5.1 M  
 Depth : 1.2 M  
 Gross Tonnage : 24.0 Tons  
 Hull : Steel  
 Speed : 11 Knots

## Capacities

Fuel : Diesel  
 Fuel Capacity : 3 Tons  
 Fresh Water : 2 Tons  
 Dispersant Tank : 2.5 Tons  
 Ballast Tank : Nil  
 Dispersant Tank : Nil

## Winch

Capacity : 15 Tons  
 Winch Type : Single Drum

## Crew Capacity

: 10 persons

The specifications provided are believed to be true but not guaranteed.



**General**

License No. : SR 3919E  
 Port of Registry : N/A  
 Built : Singapore  
 Type of Vessel : Workboat  
 Classification : N/A

**Machinery & Equipment**

Main Engine : Cummins NTC 350  
 Generator : N/A  
 Gear Box : Nliko  
 Navigational Equipment : VHF / AIS

**Principal Dimension**

Length : 12.0 M  
 Breadth : 5.1 M  
 Depth : 1.9 M  
 Gross Tonnage : 33.65 Tons  
 Hull : Steel

**Capacities**

Fuel : Diesel  
 Fuel Capacity : 8 Tons  
 Fresh Water : Nil  
 Ballast Water : Nil  
 Dispersant Tank : Nil

Speed : 10 Knots

Crew Capacity : 10 Persons

The specifications provided are believed to be true but not guaranteed.



### General

License No. : SR 2564 Z  
 Port of Registry :  
 Built : Singapore  
 Type of Vessel : Work Boat  
 Classification : Nil

### Machinery & Equipment

Main Engine : Nissan Diesel Inboard  
 Generator : N/A  
 Gear Box : Twin disc  
 Navigational Equipment : VHF, AIS

### Principal Dimension

Length : 10.0 M  
 Breadth : 4.0 M  
 Depth : 1.0 M  
 Gross Tonnage : 11.2 Tons  
 Hull : Steel  
 Speed : 9 Knots

### Capacities

Fuel : Diesel  
 Fuel Capacity : 02 Tons  
 Fresh Water : 200 ltrs  
 Ballast Water : Nil  
 Dispersant Tank : Nil  
 Crew Capacity : 4 persons

### Winch

Capacity : 4 Tons  
 Winch Type : Single Drum

The specifications provided are believed to be true but not guaranteed.



### General

License No.	: SR 3988 H
Port of Registry	: Avatiu/Cook Island
Built	: Malaysia
Type of Vessel	: Multi-Purpose / Supply Vessel
Classification	: Sing-Lloyd

### Machinery & Equipment

Main Engine	: Caterpillar (02 units); 2 x 624 HP
Generator	: 2 X 400V 60KVA 50 H2
Gear Box	: Caterpillar
Navigational Equipment	: VHF, Chart Plotter, AIS

### Principal Dimension

Length	: 43.00 M
Breadth	: 9.0 M
Depth	: 3.10 M
Gross Tonnage	: 338.60 Tons
Hull	: Steel
Speed	: 13 knots

### Capacities

Fuel	: Diesel
Fuel Capacity	: 40 Tons
Fresh Water	: 47 Tons
Dispersant Tank	: 2.5 Tons
Ballast Water	: Nil

### Crew Capacity

10 persons

The specifications provided are believed to be true but not guaranteed.





### General

**License No.** : SR 2848G  
**Port of** : Nil  
**Registry**  
**Built** : Holland,  
 Netherlands  
**Type of Vessel** : Work Boat  
**Classification** : IS Class

### Machinery & Equipment

**Main Engine** : Cummins Diesel Inboard  
 250 HP x 2  
**Generator** : 1 x 20 KVA  
**Gear Box** : 4 : 1  
**Navigational Equipment** : VHF, AIS

### Principal Dimension

**Length** : 22.3 M  
**Breadth** : 7.4 M  
**Depth** : 2.1 M  
**Gross Tonnage** : 97.8 Tons  
**Hull** : Steel  
**Speed** : 14 Knots

### Capacities

**Fuel** : Diesel  
**Fuel Capacity** : 8,000 ltrs  
**Ballast Water** : Nil  
**Dispersant Tank** : Nil  
**Crew Capacity** : 10 persons

The specifications provided are believed to be true but not guaranteed.



### General

License No.	:	SR 2786 C
Port of Registry	:	Singapore
Built	:	China 2006
Type of Vessel	:	Utility Boat
Classification	:	BV

### Machinery & Equipment

Main Engine	:	Caterpillar 3406
		272 KW x 2
Generator	:	Perkins AA 51049
		67KW
Gearbox	:	Twin disc
Navigational Equipment	:	VHF

### Principal Dimension

Length	:	18.3 M
Breadth	:	5.00 M
Depth	:	2.2 M
Gross Tonnage	:	52 Tons
Hull	:	Steel
Speed	:	11 Knots

### Capacities

Fuel	:	Diesel
Fuel Capacity	:	4.8 Tons
Fresh Water	:	0.5 Ton
Dispersant Tank	:	2.25 Tons
Ballast Water	:	Nil
Crew Capacity	:	04 persons

The specifications provided are believed to be true but not guaranteed.

**SSE MERLYN****General**

**License No.** : SR 6988D

**Built** : Louisiana, USA

**Type of Vessel** : Dive & Workboat

**Classification** : Nil

**Machinery & Equipment**

**Main Engine** : Detroit Diesel Allison 71TI (450HP x 2 units)

**Generator** : 35 KVA X 1 Cumins

**Gear Box** : Twindisc

**Navigational Equipment** : VHF, Chart Plotter, AIS

**Principal Dimension**

**Length** : 19.50 M

**Breadth** : 5.8 M

**Depth** : 2.30 M

**Gross Tonnage** : 73.4 Tons

**Hull** : Aluminium

**Speed** : 12 knots

**Capacities**

**Fuel** : Diesel

**Fuel Capacity** : 5 Tons

**Fresh Water** : 4 Tons

**Ballast Water** : Nil

**Dispersant Tank** : Nil

**Crew Capacity : 10 persons**

The specifications provided are believed to be true but not guaranteed.



### General

**License No.** : SR 3363 D  
**Port of Registry** :  
**Built** : United States  
**Type of Vessel** : Work Boat  
**Classification** : Nil

### Machinery & Equipment

**Main Engine** : Cummins Diesel Inboard x 2  
**Generator** : 325 HP x 2  
**Generator** : 46.25 KVA  
**Gear Box** : Twin disc  
**Navigational Equipment** : VHF

### Principal Dimension

**Length** : 17.0 M  
**Breadth** : 5.0 M  
**Depth** : 2.5 M  
**Gross Tonnage** : 59.9 Tons  
**Hull** : Steel  
**Speed** : 12 Knots

### Capacities

**Fuel** : Diesel  
**Fuel Capacity** : 5 Tons  
**Fresh Water** : 3.8 Tons  
**Ballast Water** : Nil  
**Dispersant Tank** : Nil  
**Crew Capacity** : 10 persons

The specifications provided are believed to be true but not guaranteed.



### General

**License No.** : SR 4028 B  
**Port of Registry** : Singapore  
**Built** : Singapore  
**Type of Vessel** : Utility Vessel  
**Classification** : Bureau Veritas

### Machinery & Equipment

**Main Engine** : WEICHAI WP12C500-21  
                   : 2 X 493  
**Generator Engine** : WEICHAI WP.3CD40E200  
                   : 2 X 40  
**Gear Box** : Hangzhou Gearbox HCQ300  
**Navigational** : VHF/AIS  
**Equipment** :

### Principal Dimension

**Length** : 14.12 M  
**Breadth** : 4.40 M  
**Depth** : 2.10 M  
**Gross Tonnage** : 32.0 Tons  
**Hull** : Aluminum  
**Speed** : 20 Knots

### Capacities

**Fuel** : Diesel  
**Fuel Capacity** : 2,250 ltrs  
**Fresh Water** : 1,000 ltrs  
**Ballast Water** : Nil  
**Dispersant Tank** : Nil  
**Crew Capacity** : 15 persons

The specifications provided are believed to be true but not guaranteed.


General

**License No.** : SR 4055 Z  
**Port of Registry** : Singapore  
**Built** : Singapore  
**Type of Vessel** : Utility Vessel  
**Classification** : Bureau Veritas

Machinery & Equipment

**Main Engine** : WEICHAJ WP12C500-21  
 2 X 368  
**Generator Engine** : WEICHAJ WP.3CD33E200  
 2 X 25 Kva  
**Gear Box** : 2 X 550 BHP 2100 RPM  
 ADVANCE HCQ 300 RATIO 2.0:1  
**Navigational Equipment** : VHF/AIS

Principal Dimension

**Length** : 14.80 M  
**Breadth** : 4.40 M  
**Depth** : 2.10 M  
**Gross Tonnage** : 32.0

Capacities

**Fuel** : Diesel  
**Fuel Capacity** : 2,250 ltrs  
**Fresh Water** : 1,000 ltrs  
**Ballast Water** : Nil  
**Dispersant Water** : Nil

**Hull** : Aluminum  
**Speed** : 20 Knots

Crew Capacity

12 persons

The specifications provided are believed to be true but not guaranteed.



### General

License No.	:	SR 2122 I
Port of Registry	:	Nil
Built	:	UK
Type of Vessel	:	Rescue boat
Classification	:	Nil

### Machinery & Equipment

Main Engine	:	Cummins Diesel Inboard
		268 KW; 2 x 300 HP
Generator	:	N/A
Gear Box	:	Twin disc
Navigational Equipment	:	DGPS, Compass, AIS VHF

### Principal Dimension

Length	:	09.0 M
Breadth	:	3.0 M
Depth	:	1.3 M
Gross Tonnage	:	9.9 Tons
Hull	:	Aluminum
Speed	:	12 Knots

### Capacities

Fuel	:	Diesel
Fuel Capacity	:	1.2 Tons
Fresh Water	:	Nil
Ballast Water	:	Nil
Dispersant Tank	:	Nil

### Passenger / Crew Capacity

10 persons / 02 persons

The specifications provided are believed to be true but not guaranteed.



### General

**License No.** : SR 3991 H  
**Port of Registry** : Nil  
**Built** : Myanmar  
**Classification** : Nil  
**Type of vessel** : Work Boat

### Machinery & Equipment

**Main Engine** : Yanmar  
 1 x 22.7 KW  
**Navigational Equipment** : ICOM VHF,  
 Plotter, AIS

### Principal Dimension

**Length** : 12.6 M  
**Breadth** : 3.8 M  
**Depth** : 1.9 M

**Gross Tonnage** : 25.6  
**Hull** : Aluminium  
**Fuel** : Diesel  
**Fuel Capacity** : 1600 Ltrs  
**Fresh Water** : 400 Ltrs  
**Ballast Water** : Nil  
**Dispersant Tank** : Nil

### No of Persons to Carry:

**\_12 Persons & 2 Crew**

**Crew Accommodation: : 2 persons**

The specifications provided are believed to be true but not guaranteed.





### General

License No. : SR 3688 I  
 Port of Registry : Nil  
 Built : Australia  
 Type of Vessel : Survey / Dive Boat  
 Classification : Nik

### Machinery & Equipment

Main Engine : Caterpillar; 220 HP  
 Generator : 8 KVA  
 Gear Box : Twin disc  
 Navigational Equipment : VHF, AIS, Chart Plotter

### Principal

#### Dimension

Length : 12.2 M  
 Breadth : 3.5 M  
 Depth : 1.5 M  
 Gross Tonnage : 18.0 Tons  
 Hull : Steel  
 Speed : 08 Knots

### Capacities

Fuel : Diesel  
 Fuel Capacity : 2 Tons  
 Fresh Water : 160 ltrs  
 Ballast Water : Nil  
 Dispersant Tank : Nil  
 Crew Capacity : 10 persons

The specifications provided are believed to be true but not guaranteed.



**SSE JUNO**



### General

**License No.** : SR 4029 J  
**Port of Registry** : Nil  
**Built** : Singapore  
**Type of Vessel** : Work Boat  
**Classification** : Nil

### Machinery & Equipment

**Main Engine** : YANMAR 6HAK  
2000 RPM  
**Generator** : N/N  
**Gear Box** : Single Disc  
**Navigational Equipment** : AIS

### Principal Dimension

**Length** : 9.29 M  
**Breadth** : 3.20 M  
**Depth** : 1.62 M  
**Gross Tonnage** : 13.6 Tons  
**Hull** : Steel

### Capacities

**Fuel** : Diesel  
**Fuel Capacity** : 750 ltr  
**Ballast Water** : Nil  
**Dispersant Tank** : Nil  
**Crew Capacity** : 4 persons

The specifications provided are believed to be true but not guaranteed.



### General

License No. : SR 2942 D/SR3931D  
 Port of Registry : Nil  
 Built : Singapore/Japan  
 Type of Vessel : Work Boat  
 Classification : Nil

### Machinery & Equipment

Main Engine : Yanmar Diesel Inboard;  
 250 HP  
 Generator : N/A  
 Gear Box : Twin disc  
 Navigational Equipment : VHF, AIS

### Principal Dimension

Length : 8.5 M  
 Breadth : 3.2 M  
 Depth : 1.2 M  
 Gross Tonnage : 9.2 Tons  
 Hull : Steel  
 Speed : 9 Knots

### Capacities

Fuel : Diesel  
 Fuel Capacity : 600 ltrs  
 Fresh Water : 40 ltrs  
 Hydraulic : 80 ltrs  
 Ballast Water : Nil  
 Dispersant Tank : Nil

### Winch

Capacity : 4 Tons  
 Winch Type : Single Drum

Crew Capacity : 4 persons

The specifications provided are believed to be true but not guaranteed.

**General**

**License No.** : SR 3653F  
**Port of Registry** : NIL

**Built** : Singapore  
**Classification** : Nil  
**Type of Vessel** : Supply Vessel

**Principal Dimension**

**Length** : 8.00 M  
**Breadth** : 1.20 M  
**Depth** : 0.70 M  
**Gross Tonnage** : 2.0 Tons  
**Hull** : Aluminum  
**Speed** : 15 Knots

**Machinery & Equipment**

**Main Engine** : Yanmar 4BY2 – 150Z

**Navigational Equipment** : VHF

**Capacities**

**Fuel** : Diesel  
**Fuel Capacity** : 500 Liters  
**Ballast Water** : Nil  
**Dispersant Tank** : Nil

**Crew Capacity** : 5 persons

The specifications provided are believed to be true but not guaranteed.



General

License No : SR 3389 H (SSE Claire) / SR 3387 A (SSE Claris)  
Type of vessel : Work boat / Mooring Boat

Main Engine : 2 x Detoit Diesel 353 Series

Capacities

Fuel Diesel  
Fuel Capacities 0.5 Ton

Principal Dimension

Length of Overall : 8.2 M  
Breadth : 2.2 M  
Depth : 2.0 M  
Gross Tonnage : 10.1 Tons  
Speed : 12 Knots  
Hull : Aluminum  
Crew Capacity : 4

The specifications provided are believed to be true but not guaranteed



**SSE AYRA**



**General**

**License No.** : SC 4198C  
**Port of Registry** : Singapore  
**Built** : Batam, Indonesia  
**Type of Vessel** : Flat Top Barge  
**Classification** : DNV

**Principal Dimension**

**Length** : 67.3 M  
**Breadth** : 19.6 M  
**Depth** : 4.3 M  
**Gross Tonnage** : 1463 Tons  
**Hull** : Steel

**The specifications provided are believed to be true but not guaranteed.**



**SSE QISTINA**



**General**

**License No.** : SC 4131B  
**Port of Registry** : Singapore  
**Built** : Batam, Indonesia  
**Type of Vessel** : Flat Top Barge  
**Classification** : DNV

**Principal Dimension**

**Length** : 52.7 M  
**Breadth** : 18.3 M  
**Depth** : 3.7 M  
**Gross Tonnage** : 902 Tons  
**Hull** : Steel

The specifications provided are believed to be true but not guaranteed.



### SSE IMELDA

#### General

License No.	:	SR 5018 D
Port of Registry	:	Singapore
Built	:	Batam, Indonesia
Type of Vessel	:	DG Work Barge
Classification	:	Rina

#### Principal Dimension

Length	:	35.1 M
Breadth	:	12.1 M
Depth	:	2.4 M
Gross Tonnage	:	258.0 Tons
Hull	:	Steel

### SSE AMANDA

#### General

License No.	:	SC 4369 B
Port of Registry	:	Nil
Built	:	Indonesia
Type of Vessel	:	DG Work Barge
Classification	:	Nil

#### Principal Dimension

Length	:	35.2 M
Breadth	:	12.2 M
Depth	:	2.5 M
Gross Tonnage	:	303.0 Tons
Hull	:	Steel

The specifications provided are believed to be true but not guaranteed.



 **SSE ATHENA**



 **SSE ARISSA**



 **SSE ARIANA**



**License No:** SSE ATHENA: SC 5017 F

**SSE ARISSA: SR 3854 G and SSE ARIANA SR 8668 A**

**General**

**General**

**Port of Registry** : Singapore  
**Type of Vessel** : DG Work Barge  
**Classification** : Nil

**Port of Registry** : Singapore  
**Type of Vessel** : Work Barge  
**Classification** : Nil / DNV

**Principal Dimension**

**Principal Dimension**

**Length** : 35.2 M  
**Breadth** : 12.1 M  
**Depth** : 2.4 M  
**Gross Tonnage** : 258.0 Tons  
**Hull** : Steel

**Length** : 35.2 M  
**Breadth** : 12.2 M  
**Depth** : 2.5 M  
**Gross Tonnage** : 258.0 Tons  
**Hull** : Steel

The specifications provided are believed to be true but not guaranteed.

Copyright Reserved by  
 Singapore Salvage Engineers Pte Ltd  
 No Materials from our publication can be used or copied by public.



**General**

**License No.** : SR 2980G  
**Port of Registry** :  
**Built** : Singapore  
**Type of Vessel** : Work Barge  
**Classification** : Nil

**Principal Dimension**

**Length** : 30.0 M  
**Breadth** : 13.9 M  
**Depth** : 1.2 M  
**Gross Tonnage** : 141.2 Tons  
**Hull** : Steel

The specifications provided are believed to be true but not guaranteed.



## General

License No.	:	SC 4368D
Port of Registry	:	Harbour Craft
Built	:	United States
Type of Vessel	:	DG Flat Top Barge

## Principal Dimension

Length	:	24.0 M
Breadth	:	8.5 M
Depth	:	2.4 M
Gross Tonnage	:	138.2 Tons
Hull	:	Steel

The specifications provided are believed to be true but not guaranteed.



### General

License No.	:	SR 3376F
Port of Registry	:	Nil
Built	:	Singapore
Type of Vessel	:	Work Barge

### Principal Dimension

Length	:	15.3 M
Breadth	:	5.8 M
Depth	:	1.2 M
Gross Tonnage	:	30.0 Tons
Hull	:	Steel

The specifications provided are believed to be true but not guaranteed.



## General

License No.	:	SC 4211 D
Port of Registry	:	NIL
Built	:	2000
Type of Vessel	:	DG Flattop Barge

## Principal Dimension

Length	:	15.3 M
Breadth	:	6.0 M
Depth	:	1.2 M
Gross Tonnage	:	30.51 Tons
Hull	:	Steel

The specifications provided are believed to be true but not guaranteed.



**General**

**License No.** : SR 3917 I  
**License Type** :  
**Built** : Singapore  
**Type of Vessel** : Commercial Diving and Professional Training Base

**Principal Dimension**

**Length** : 15.5 M  
**Breadth** : 12.5 M  
**Depth** : 2.0 M  
**Gross Tonnage** : 109.3Tons  
**Hull** : Steel

The specifications provided are believed to be true but not guaranteed.



**General**

**Built** : China  
**Type of vessel** : Floating Dock

**Machinery & Equipment**

**Main Engine** : N/A  
**Generator Output** : 440 Volts  
**Main Power** : 200 KVA  
**AUX Power** : 150 KVA  
**Navigational Equipment** : VHF

**Principal Dimension**

**Length** : 59.1 M  
**Breadth** : 28.0 M  
**Depth of side wall above base line** : 9.8 M  
**Gross Tonnage** : 1353 Tons  
**Hull** : Steel  
**Clear Deck Space** :

**Auxiliary**

01 Steel Tender Boat  
 Surface Welding & Cutting Gears  
 Underwater Welding & Cutting Gears  
 Hydraulic Power Pack

**Heavy Lift**

**Crane** : IHI KF2000S  
**Max. Boom Length** : 40 M  
**Crane SWL** : 190 Tons  
**AUX** : 18 Tons  
**Lift Height** : 47 M

**Capacities**

**Fuel** : Diesel  
**Fuel Capacity** : 118,670 ltr  
**Astern Ballast Tank** : 500,000 ltr  
**Hydraulic** : 1,000 ltr

**Anchor System**

4 Point Mooring  
 4.0 Ton Anchor (04 Units)

**Accommodation**

Accommodation Rooms (20 pax)  
 Mess Room  
 Toilet / Shower  
 Fully Air-Conditioned



### General

**Built** : Singapore  
**Type of vessel** : Floating Dock

### Principal Dimension

**Length** : 68.4 M  
**Breadth** : 18.0 M  
**Depth of Pontoon** : 2.1 M  
**Depth of side wall above base length** : 9.0 M  
**Hull** : Steel  
**Lifting capacity of Dock** : 600 Ton

### Heavy Lift

**Crane** : Fixed Pedestal Crane x 01 unit  
**Max. Boom Length** : 30 M  
**Min Boom Length** : 4 M  
**Crane SWL** : 5 Ton

### Machinery & Equipment

**Main Engine** : N/A  
**Generator Output** : 50kW/62.5kVA  
**Main Power** : 400 V  
**Speed** : 1500 rpm  
**Navigational Equipment** : VHF  
**Air Compressor** : 11 m/hr (7 bar)  
**Air Compressor Speed** : 1410 rpm

### Auxiliary

01 Steel Tender Boat  
 Surface Welding & Cutting Gears  
 Underwater Welding & Cutting Gears  
 Hydraulic Power Pack

### Capacities

**Fuel** : Diesel  
**Fuel Capacity** : 70.14 Ton  
**Fresh Water Capacity** : 20.12 Ton  
**Ballast** : 1792.12 Ton

The specifications provided are believed to be true but not guaranteed.





# Oil Spill Response Equipment



BRUSH SKIMMERS



DISC MECHANICAL SKIMMERS



VARIOUS SKIMMER CONTAINERISED FOR QUICK MOB



2 X FAST STORAGE TANKS FOR OIL SPILL 10,000litres



OIL SPILL DISPERSANTS ( 30,000 LITRES)



1 X 20FT CONTR OF OIL SORBENT PADS



200MTRS OF OIL ABSORBENT BOOM



200 MTRS OF SEA CURTAINS



600MTRS OF RIGID OIL CONTAINMENT BOOM



800 MTRS OF INFLATABLE OIL BOOM



# Salvage Equipment



HYDRAULIC POWER PACK



ELECTRICAL DEWATERING PUMPS



PORTABLE HYDRAULIC SUBMERSIBLE CARGO PUMPS – 150 cu.m per hour



VARIOUS SIZES OF CUPLINKS AND REDUCERS



HYDRAULIC CARGO TRANSFER PUMP  
66 cu.m per.hr 1,000,000 CST



TRIPODS



HYDRAULIC PUMP



PNEUMATIC PUMPS



# Salvage Equipment



## Diesel Driven Pumps



LARGE PORTABLE FIRE PUMP

# CHAIN PULLERS



# DIAMOND WIRE CUTTER 38" to 48"

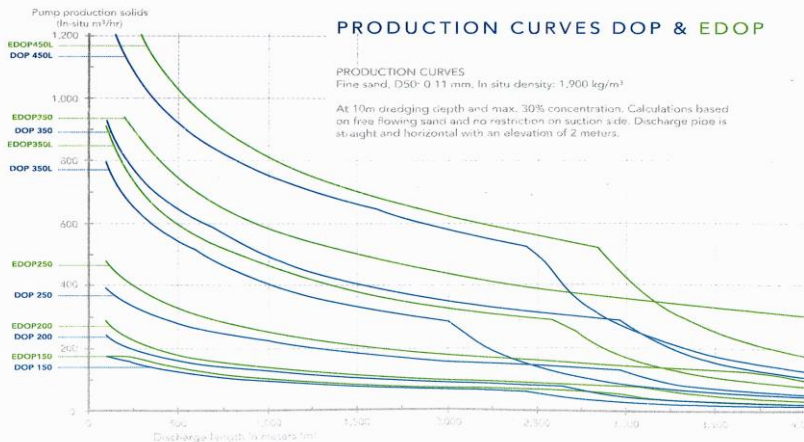


- PILE/PIPELIN
- DIAMOND WIRE BLADE
- HYDRAULIC UMBILICAL

Copyright Reserved by  
Singapore Salvage Engineers Pte Ltd  
No Materials from our publication can be used or copied  
by public

# DOP DREDGE PUMP

THE MOST EFFICIENT WAY TO DREDGE



## 4 TECHNICAL INFORMATION

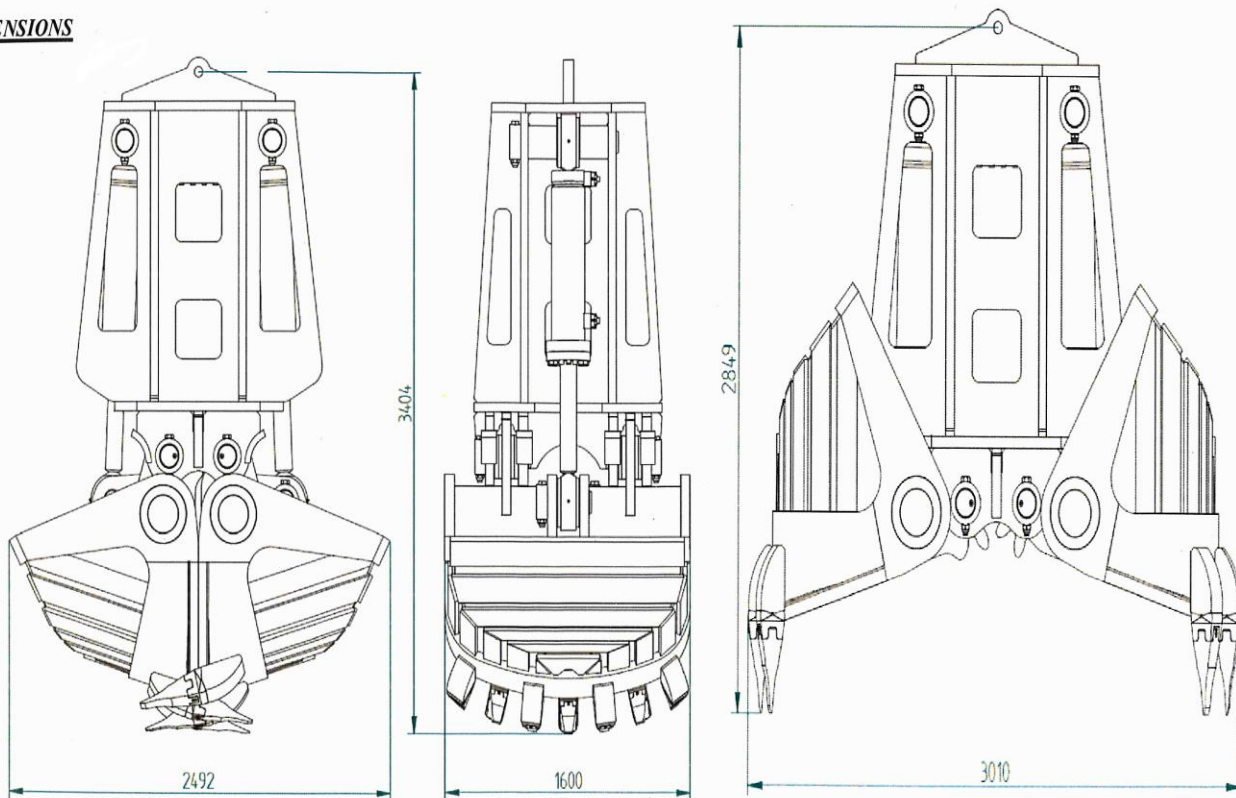
### Hydraulic Round nose Grab

Type : HRGHH 1800

Serial nr. : 12299

SWL	:	14 ton
Capacity	:	1800 Ltr. (1.8 m <sup>3</sup> )
Hydraulic connection	:	SAE 1"
Number of cylinders	:	2
Cylinder execution	:	Double acting
Max. operating pressure	:	320 Bar
Max. flow cylinders	:	300 Ltr/min
Max. depth	:	1300 meters

### MAIN DIMENSIONS





# OFFSHORE SUBSEA WORKS WITH FULLY IMCA COMPLIANCE AIR / MIXED GAS DIVING SYSTEM

**SERVING YOU WITH TOTAL:  
QUALITY, SAFETY AND RELIABILITY**



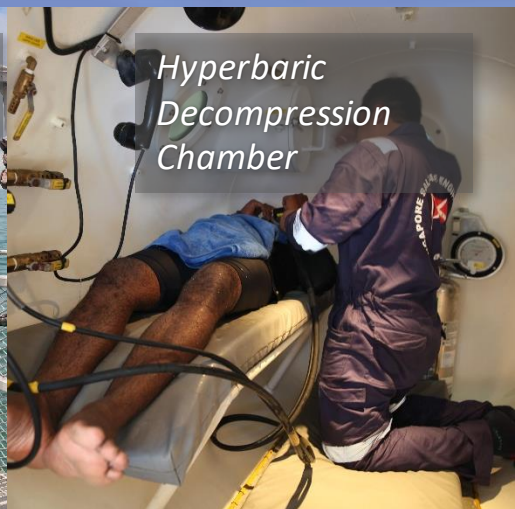
Air or Mixed Gas Diving Panel With 3 Divers Monitoring and CCTV Hard Disk Recordings.  
High Resolution: 700 TVL Cameras. With 60" Twin Lock Decompression Chamber and Launch & Recovery Systems.



*3 Men Air / Mixed Gas Dive Panel*



*Diver's Launch & Recovery System*

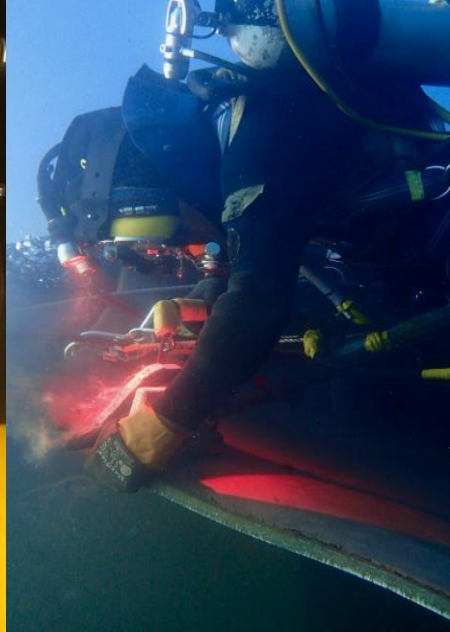
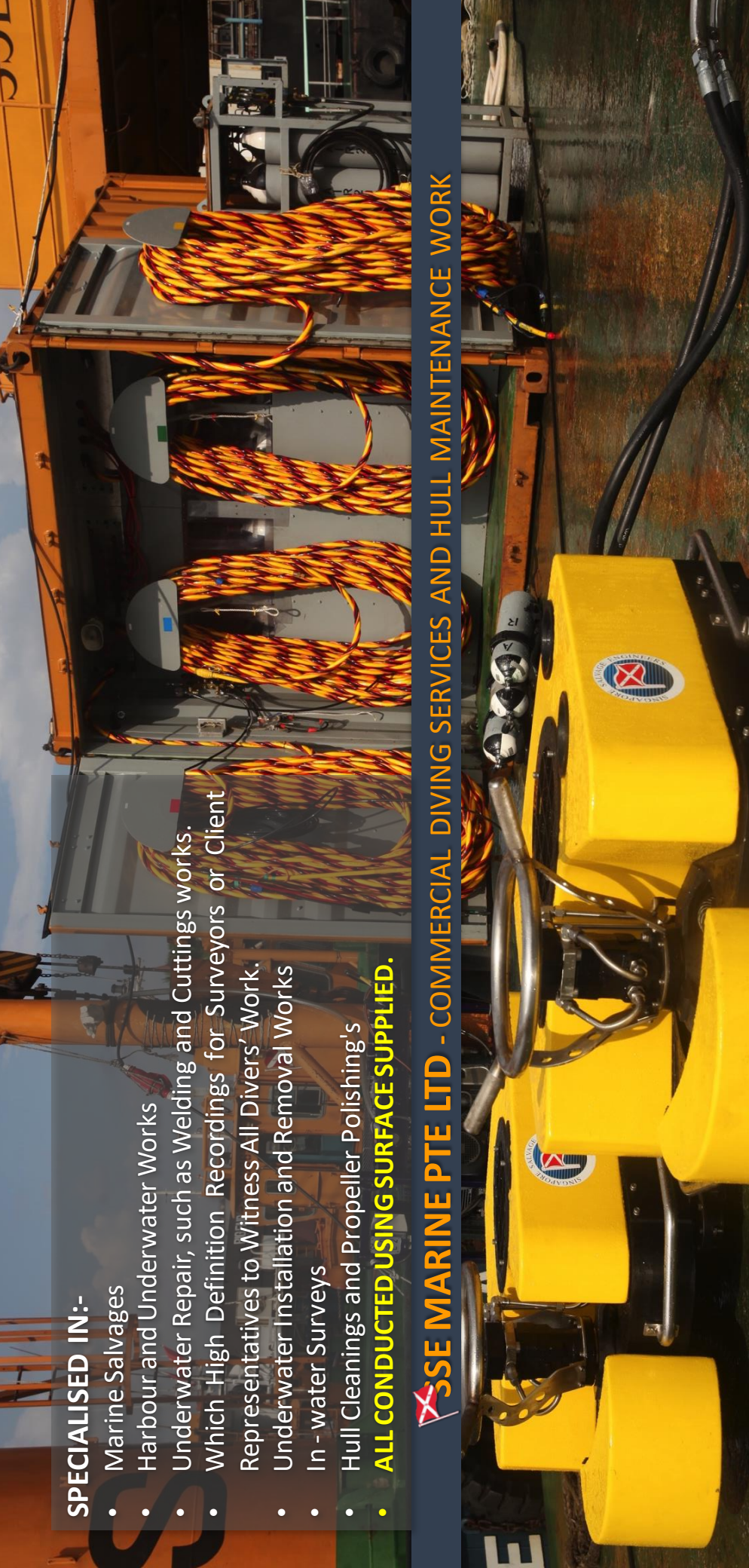


*Hyperbaric Decompression Chamber*

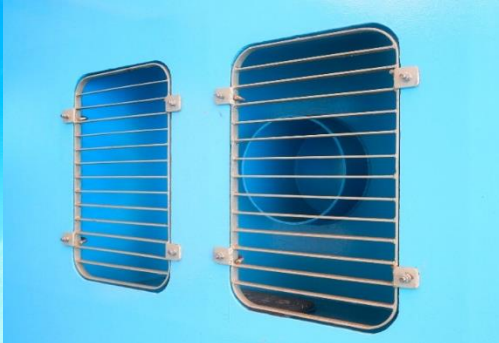
## SPECIALISED IN:-

- Marine Salvages
- Harbour and Underwater Works
- Underwater Repair, such as Welding and Cuttings works.
- Which High Definition Recordings for Surveyors or Client Representatives to Witness All Divers' Work.
- Underwater Installation and Removal Works
- In - water Surveys
- Hull Cleanings and Propeller Polishing's
- **ALL CONDUCTED USING SURFACE SUPPLIED.**

 **SSE MARINE PTE LTD - COMMERCIAL DIVING SERVICES AND HULL MAINTENANCE WORK**



 **SSE TRAINING CENTRE– TRAINING POOL ( 30FT X 12FT X 8FT DEPTH)**



**TRAINING FACILITY:**

- UNDERWATER WELDING / CUTTING;
- SEA CHEST OPERATIONS;
- HYDRUALIC TOOLINGS.IE PROPELLER POLISHING;
- UNDERWATER INSPECTION WORKS;
- SKILLS REFAMILIARISATION PRIOR TO OPERATIONS





# Gallery





**WE ARE AT**  
No.23, Shipyard Road,  
Singapore 628129



**WE ARE ALSO AT**  
13 Tuas South Walk  
Singapore 636753



Office Address: No. 23 Shipyard Road, Singapore 628129  
Tel: +65 6775 7653 / +65 6775 3972 ( 24 hrs )  
Email: [francis@singaporesalvage.com](mailto:francis@singaporesalvage.com)  
Website: [www.singaporesalvage.com](http://www.singaporesalvage.com)



 **WE ARE ALSO AT**  
**12 Tuas South Street 15**  
**Singapore 636908**



**Office Address: No. 23 Shipyard Road, Singapore 628129**  
**Tel: +65 6775 7653 / +65 6775 3972 ( 24 hrs )**  
**Email: francis@singaporesalvage.com**  
**Website: www.singaporesalvage.com**